

Swing cylinders - Lower flange models

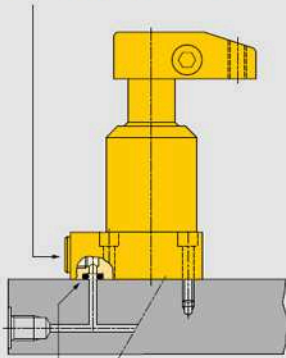
Shown: SLRD-52, SLRS-202



SL series

Enerpac lower flange series swing cylinders can be bolted to the fixture, allowing easy installation of the unit and does not require machined fixture holes. Hydraulic connections are made through SAE or BSPP oil connection or the standard integrated O-ring ports.

BSPP oil connection



Integrated O-ring port

Lower flange swing cylinders mounted to the face of the fixture.



No fixture hole required

...cylinder can be bolted directly to fixture

- Flexible design allows for manifold or threaded port connection
- No fixture hole preparation required
- Easiest mounting preparation in the swing cylinder line
- Symmetrical rectangular flange design enables clamping at three sides of the cylinder
- Allows extra large parts to be clamped

Product selection

Clamping force ¹⁾	Stroke		Left turning 90°	Right turning 90°	Cylinder effective area		Oil capacity		Max. oil flow ¹⁾	Standard clamp arm Sold separately [24]
	kN	Clamp.			Total	cm ²	cm ³	cm ³		
▼ Single-acting										
Model number ²⁾										
2,1	8	16,5	SLLS-22	SLRS-22	0,77	-	1,31	-	0,2	CAS-22
4,9	10	22,6	SLLS-52	SLRS-52	1,81	-	4,10	-	0,4	CAS-52
8,0	12	22,1	SLLS-92	SLRS-92	3,16	-	6,88	-	1,0	CAS-92
10,7	13	28,4	SLLS-121	SLRS-121	4,06	-	11,47	-	1,6	CAS-121
17,4	14	27,9	SLLS-202	SLRS-202	7,10	-	19,99	-	2,3	CAS-202
33,1	16	30,0	SLLS-352	SLRS-352	12,39	-	37,20	-	3,9	CAS-352

▼ Double-acting										
Model number ²⁾										
2,2	8	16,5	SLLD-22	SLRD-22	0,77	1,55	1,31	2,62	0,2	CAS-22
5,6	10	22,6	SLLD-52	SLRD-52	1,81	3,81	4,10	8,69	0,4	CAS-52
9,0	12	22,1	SLLD-92	SLRD-92	3,26	8,06	6,88	17,70	1,0	CAS-92
11,6	13	28,4	SLLD-121	SLRD-121	4,06	7,94	11,47	22,94	1,6	CAS-121
18,7	14	27,9	SLLD-202	SLRD-202	7,10	15,26	19,99	42,61	2,3	CAS-202
33,8	16	30,0	SLLD-352	SLRD-352	12,39	23,74	37,20	71,38	3,9	CAS-352

¹⁾ With standard clamp arm. Clamping forces for single-acting models are reduced in order to overcome return spring force.

Note: Call Enerpac to order models with SAE port connections.

²⁾ For models with straight plunger movement, replace L or R with S.

Dimensions in mm [E]

Left turning models	A	C	D	D1	D2	F	H	K	M	N	P
▼ Single-acting											
SLLS-22	112	96,5	27,9	47,2	45	10	14	16	-	15,5	24
SLLS-52	134,9	115,6	34,8	54,1	57	16	14	19	-	19,1	40
SLLS-92	151	126,1	47,8	70,1	54	25	12	25	15,5	26,9	45
SLLS-121	171	141,4	47,8	66,8	73	22	16	30	-	25,4	51
SLLS-202	173	142,9	63,8	85,1	70	32	12	30	23,6	35,1	55
SLLS-352	195	151,0	80,0	100,1	89	38	12	40	27,9	44,5	68
▼ Double-acting											
SLLD-22	112	96,5	27,9	47,2	45	10	14	16	-	15,5	24
SLLD-52	134,9	115,6	34,8	54,1	57	16	14	19	-	19,1	40
SLLD-92	151	126,1	47,8	70,1	54	25	12	25	-	26,9	45
SLLD-121	171	126,0	47,8	66,8	73	22	16	30	-	25,4	51
SLLD-202	173	142,9	63,8	85,1	70	32	12	30	-	35,1	55
SLLD-352	195	151,0	80,0	100,1	89	38	12	40	-	44,5	68

Note: Dimensions shown with standard clamp arm.

We offer a Full Range of Hydraulic Products from a comprehensive range of manufacturers to bring you the products and systems most suited to your applications



Dimensions & options **SL series**

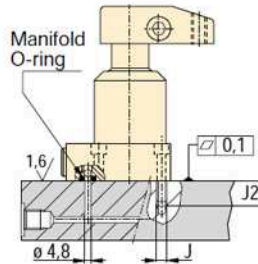


Installation dimensions in mm

Clamping force ¹⁾ kN	Mounting thread J	Minimum thread depth J2	Manifold O-ring ²⁾ ARP nr. or Inside Ø x thickness
2,2	M5	16,5	568-010
5,6	M6	16,5	568-011
9,0	M6	15,0	4,32 x 3,53
11,6	.312-24 UNF	20,3	568-011
18,7	M8	17,0	4,32 x 3,53
33,8	M10	18,8	4,32 x 3,53

¹⁾ With standard clamp arm.
²⁾ Polyurethane, 92 Durometer

Note: Mounting bolts and O-rings included.

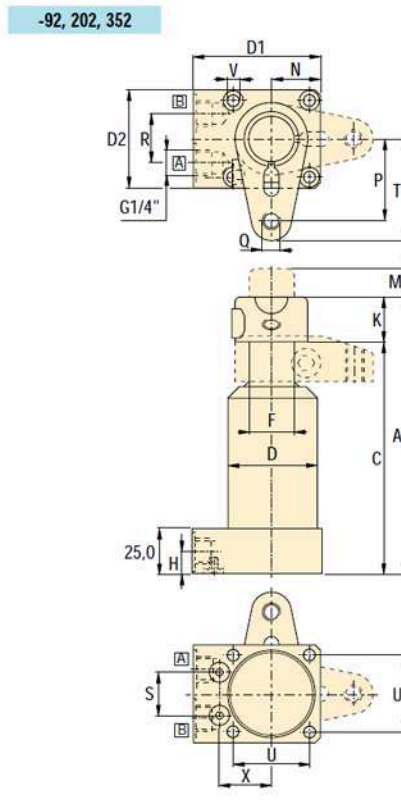
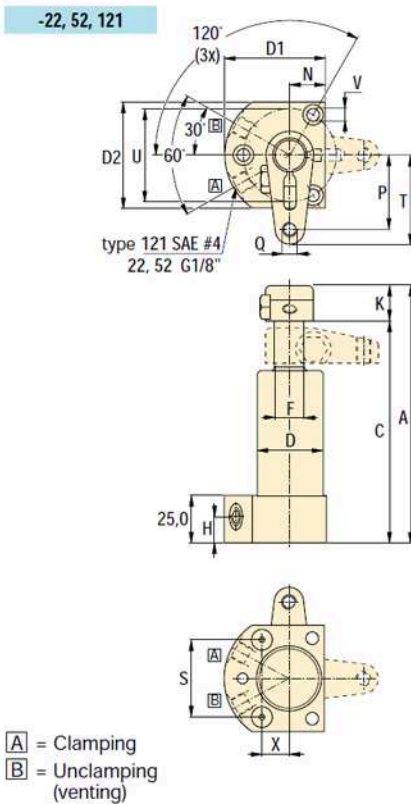


Force: 2,1 - 33,8 kN

Stroke: 16,5 - 30,0 mm

Pressure: 34 - 350 bar

- (E) Cilindros giratorios
- (F) Vérins de bridage pivotants
- (D) Schwenkspannzylinder




Options

Clamp arms  [24](#)

Work supports  [28](#)

Collet-Lok® swing cylinders  [22](#)

Sequence Valves  [92](#)


Important

Single-acting cylinders can be vented through the manifold port.

The lower flange swing cylinder has a bolt pattern which is identical to its upper flange equivalent, enabling interchangeability.

In case there is a risk of machining coolants and debris being inhaled via the breather vent, it is recommended to pipe this port to an area outside the fixture that is protected from machining coolants and debris.

Do not exceed maximum flow rates.

	Q	R	S	T	U	V	X		Right turning models
						ø		kg	
									Single-acting ▼
	M6x1	-	21,0	31	40	5,6	18,1	0,5	SLRS-22
	M8x1,25	-	41,0	48	50	6,9	14,3	1,1	SLRS-52
	M10x1,5	26	23,6	56	42	6,9	28,7	2,0	SLRS-92
	.375-16UN	-	52,4	62	64	8,9	18,4	1,6	SLRS-121
	M12x1,75	26	29,0	70	55	8,4	35,1	3,5	SLRS-202
	M16x2	25	34,4	83	70	10,7	41,6	5,5	SLRS-352
									Double-acting ▼
	M8x1,25	-	21,0	31	40	5,6	18,1	0,5	SLRD-22
	.312-18UN	-	41,0	48	50	6,9	14,3	1,1	SLRD-52
	M10x1,5	-	23,6	56	42	6,9	28,7	2,0	SLRD-92
	.375-16UN	-	52,4	62	64	8,9	18,4	1,6	SLRD-121
	M12x1,75	26	29,0	70	55	8,4	35,1	3,5	SLRD-202
	M16x2	25	34,4	83	70	10,7	41,6	5,5	SLRD-352

Note: U = Bolt circle, U1 = Manifold port circle.

We offer a Full Range of Hydraulic Products from a comprehensive range of manufacturers to bring you the products and systems most suited to your applications

