

## Swing cylinders - Threaded body models

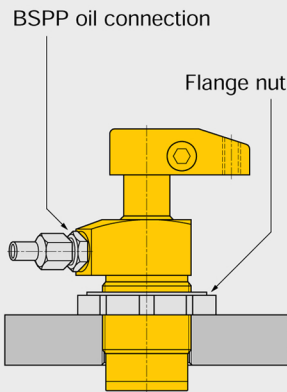
Shown: STRD-52, STRD-202

Swing cylinders  
Work supports



### ST series

Enerpac threaded body swing cylinders are threaded directly into the fixture. The cylinder height is adjusted to the appropriate height, and then locked in place using a flange nut.



Threaded body swing cylinders allow the clamp to be buried in the fixture to minimize the required area, while the height remains adjustable.



### Cylinders can be threaded directly into fixture

...can be secured at any height

- Body thread for precise cylinder height positioning
- Threaded port connection
- Easy installation and removal
- Greatest flexibility in fixture design

### Product selection

Clamping force <sup>1)</sup>	Stroke		Left turning 90°	Right turning 90°	Cylinder effective area		Oil capacity		Max. oil flow <sup>1)</sup>	Standard clamp arm Sold separately □ 24 ▶
	kN	Clamp.			Total	cm <sup>2</sup>	Un-clamp	cm <sup>3</sup>		
▼ Single-acting										
			Model number <sup>2)</sup>							
2,1	8	16,5	STLS-22	STRS-22	0,77	-	1,31	-	0,2	CAS-22
4,9	10	22,6	STLS-52	STRS-52	1,81	-	4,10	-	0,4	CAS-52
8,0	12	22,1	STLS-92	STRS-92	3,16	-	6,88	-	1,0	CAS-92
10,7	13	28,4	STLS-121	STRS-121	4,06	-	11,47	-	1,6	CAS-121
17,4	14	27,9	STLS-202	STRS-202	7,10	-	19,99	-	2,3	CAS-202
33,1	16	30,0	STLS-352	STRS-352	12,39	-	37,20	-	3,9	CAS-352
▼ Double-acting										
			Model number <sup>2)</sup>							
2,2	8	16,5	STLD-22	STRD-22	0,77	1,55	1,31	2,46	0,2	CAS-22
5,6	10	22,6	STLD-52	STRD-52	1,81	3,81	4,10	8,52	0,4	CAS-52
9,0	12	22,1	STLD-92	STRD-92	3,16	8,06	6,88	17,70	1,0	CAS-92
11,6	13	28,4	STLD-121	STRD-121	4,06	7,94	11,47	22,94	1,6	CAS-121
18,7	14	27,9	STLD-202	STRD-202	7,10	15,16	19,99	42,61	2,3	CAS-202
33,8	16	30,0	STLD-352	STRD-352	12,39	23,74	37,20	71,28	3,9	CAS-352

<sup>1)</sup> With standard clamp arm. Clamp arms are sold separately (□ 10, 24). Clamping forces for single-acting models are reduced in order to overcome return spring force.

Note: Call Enerpac to order models with imperial thread and SAE port connections.

<sup>2)</sup> For models with straight plunger movement, replace L or R with S.

### Dimensions in mm [□ ⊕]

Left turning models	A	B	C	C1	D	D1	D2	F	G	H
▼ Single-acting										
STLS-22	112	59	42,5	25	M28 x 1,5	39,4	33	10	G1/8"	10
STLS-52	135	69	49,6	25	M35 x 1,5	47,5	38	16	G1/8"	10
STLS-92	143	80	55,1	30	M48 x 1,5	62,5	48	25	G1/4"	13
STLS-121	171	86	55,4	25	1.875-16 UNF	60,5	51	22	SAE#4	10
STLS-202	165	93	62,9	32	M65 x 1,5	75,9	65	32	G1/4"	13
STLS-352	186	105	65,0	32	M80 x 2	88,4	80	38	G1/4"	13
▼ Double-acting										
STLD-22	112	59	42,5	25	M28 x 1,5	39,4	33	10	G1/8"	10
STLD-52	135	69	49,6	25	M35 x 1,5	47,5	38	16	G1/8"	10
STLD-92	143	80	55,1	30	M48 x 1,5	62,5	48	25	G1/4"	13
STLD-121	171	86	55,4	25	1.875-16 UNF	60,5	51	22	SAE#4	10
STLD-202	165	93	62,9	32	M65 x 1,5	75,9	65	32	G1/4"	13
STLD-352	186	105	65,0	32	M80 x 2	88,4	80	38	G1/4"	13

Note: Dimensions shown with standard clamp arm.

We offer a Full Range of Hydraulic Products from a comprehensive range of manufacturers to bring you the products and systems most suited to your applications



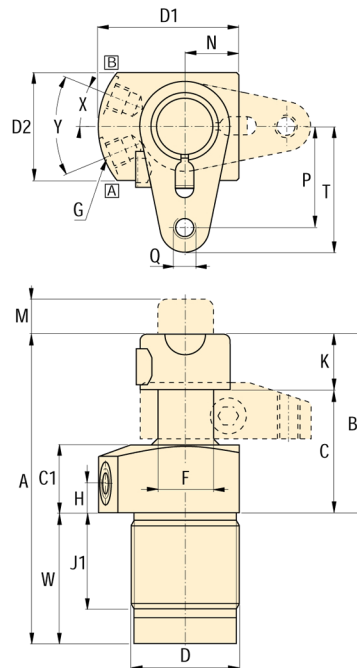
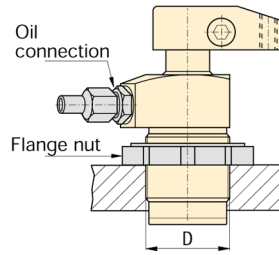
Dimensions & options **ST series**



**Installation dimensions**  
in mm

Clamping <sup>1)</sup> Force kN	Fixtured hole thread size D
2,2	M28 x 1,5
5,6	M35 x 1,5
9,0	M48 x 1,5
11,6	1.875-16 UNF
18,7	M65 x 1,5
33,8	M80 x 2

<sup>1)</sup> With standard clamp arm.



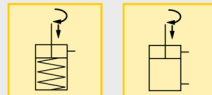
**A** = Clamping  
**B** = Unclamping (venting)

**Force:** 2,1 - 33,8 kN

**Stroke:** 16,5 - 30,0 mm

**Pressure:** 35 - 350 bar

- E** Cilindros giratorios
- F** Vérins de bridage pivotants
- D** Schwenkspannzylinder



**Options**

**Clamp arms**  
□24 ▶

**Work supports**  
□28 ▶

**Collet-Lok® swing cylinders**  
□22 ▶

**Accessories**  
□72 ▶

**Sequence valves**  
□92 ▶

**Important**

Single-acting cylinders can be vented through the manifold port.

In case there is a risk of machining coolants and debris being inhaled via the breather vent, it is recommended to pipe this port to an area outside the fixture that is protected from machining coolants and debris.

Do not exceed maximum flow rates.

	J1	K	M	N	P	Q	T	W	X	Y	kg	Right turning models
												Single-acting ▼
	53,5	16	-	15,5	24	M6 x 1	31	53,5	25°	-	0,5	STRS-22
	66,4	19	-	19,1	40	M8 x 1,25	48	66,4	25°	50°	1,1	STRS-52
	43	25	15,5	23,9	45	M10 x 1,5	56	63,0	22,5°	45°	2,0	STRS-92
	85,8	30	-	25,4	51	.375-16 UNC	62	85,8	25°	50°	1,6	STRS-121
	55	30	23,6	32,5	55	M12 x 1,75	70	71,9	22,5°	45°	3,2	STRS-202
	65	40	27,9	39,9	68	M16 x 2	83	81,5	22,5°	45°	5,5	STRS-352
												Double-acting ▼
	53	16	-	15,5	24	M6 x 1	31	53,5	25°	50°	0,5	STRD-22
	66	19	-	19,1	40	M8 x 1,25	48	66,4	25°	50°	1,1	STRD-52
	43	25	-	23,9	45	M10 x 1,5	56	63,0	22,5°	45°	2,0	STRD-92
	85,8	30	-	25,4	51	.375-16 UNC	62	85,8	25°	50°	1,6	STRD-121
	55	30	-	32,5	55	M12 x 1,75	70	71,9	22,5°	45°	3,5	STRD-202
	65	40	-	39,9	68	M16 x 2	83	81,5	22,5°	45°	5,5	STRD-352

Swing cylinders  
Work supports

Linear cylinders

Power sources

Valves

System components

Yellow pages

We offer a Full Range of Hydraulic Products from a comprehensive range of manufacturers to bring you the products and systems most suited to your applications

