

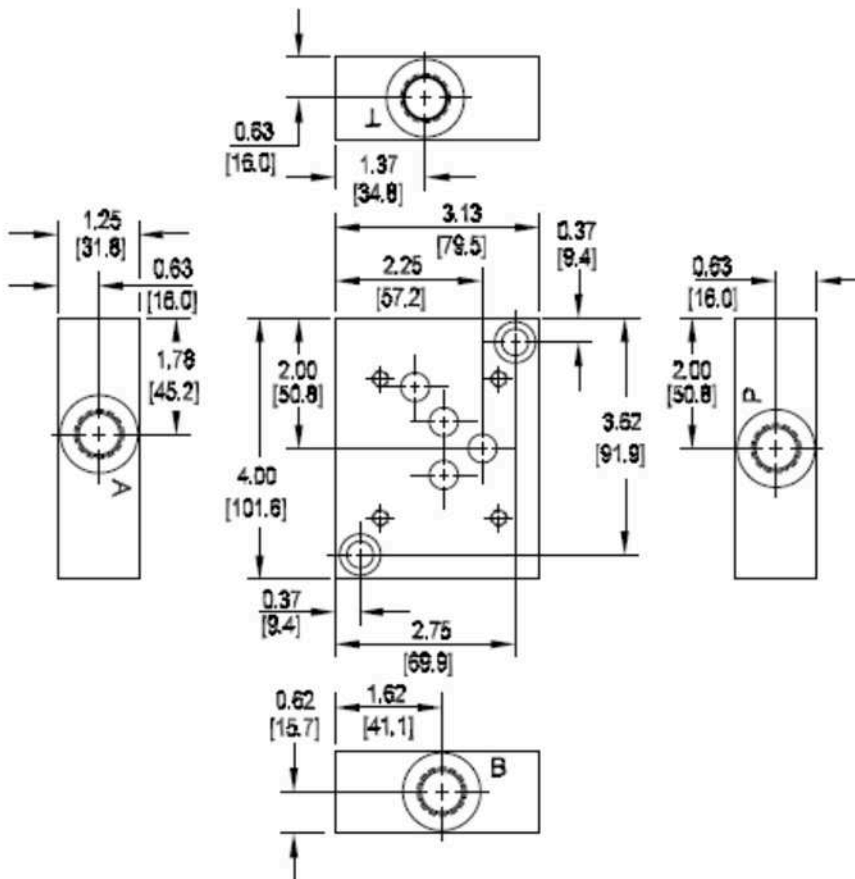
## CETOP 5: Side Entry Subplate

### Features:

- Cast Iron Construction – Phosphated
- 345 Bar Maximum Working Pressure
- 1/2" BSP Ported

### Benefits:

- Compact design of valve circuits



We offer a Full Range of Hydraulic Products from a comprehensive range of manufacturers to bring you the products and systems most suited to your applications