

Threaded cylinders *Application & selection*

Shown: CST-10382, CST-572, CST18252, CDT-18132, CDT-40252



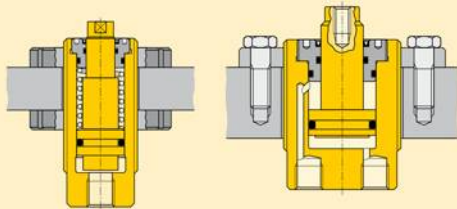
Collet-Lok® products

Swing clamps

Work Supports

Linear Cylinders

Threaded cylinders are designed for workpiece positioning, holding and ejecting applications where space is at a premium. Double-acting models are also suited to manufacturing applications, such as production punching.



Accessory chart

Body thread D	Mounting flange Sold Separately □ 87 ▶	Flange nut Sold Separately □ 86 ▶	Plunger thread K	Contact bolt Sold Separately □ 86 ▶
M12 x 1,5	MF-122	FN-122	M4 x 0,7	BS-42
M20 x 1,5	MF-202	FN-202	M6 x 1	BS-62
M28 x 1,5	MF-282	FN-282	M8 x 1,25	BS-82
M30 x 1,5	-	FN-302	M10 x 1,5	BS-102
M35 x 1,5	MF-352	FN-352	M16 x 2	BS-162
M42 x 1,5	MF-422	FN-422	M20 x 2,5	BS-202
M48 x 1,5	MF-482	FN-482		
M55 x 1,5	MF-552	FN-552		
M65 x 1,5	MF-652	FN-652		
M80 x 2	MF-802	FN-802		

Threaded cylinder, mounted with horizontal bracket to position the workpiece against the stops. Enerpac swing cylinders are then activated to clamp the work piece before machining operations begin.



High clamping forces in a compact body

- Minimum cylinder diameter combined with maximized clamping forces
- Threaded body allows fine positioning and easy installation
- Internal plunger wipers allow maintenance-free, high-cycle performance
- Center-tapped plungers will hold workpiece contact buttons
- Single-acting models with spring return simplify hydraulic tubing requirements
- Double-acting models are recommended for high-cycle applications.

Product selection

Cylinder capacity at 350 bar kN	Stroke mm	Model number	Effective area		Oil capacity		
			push cm ²	pull cm ²	push cm ³	pull cm ³	
▼ Single acting							
1,7	-	7,3	CST-272	0,52	-	0,36	-
1,7	-	10,3	CST-2102	0,52	-	0,52	-
1,7	-	12,0	CST-2132	0,52	-	0,67	-
4,4	-	7,0	CST-572	1,29	-	0,82	-
4,4	-	13,0	CST-5132	1,29	-	1,64	-
4,4	-	18,8	CST-5192	1,29	-	2,46	-
4,4	-	25,0	CST-5252	1,29	-	3,11	-
4,4	-	37,4	CST-5382	1,29	-	4,75	-
11,3	-	8,6	CST-1072	3,32	-	2,32	-
11,3	-	13,0	CST-10132	3,32	-	4,31	-
11,3	-	19,0	CST-10192	3,32	-	6,30	-
11,3	-	26,8	CST-10252	3,32	-	8,29	-
11,3	-	38,0	CST-10382	3,32	-	12,60	-
17,2	-	13,0	CST-18132	5,10	-	6,63	-
17,2	-	25,0	CST-18252	5,10	-	12,74	-
17,2	-	38,0	CST-18382	5,10	-	19,37	-
17,2	-	50,0	CST-18502	5,10	-	25,48	-
26,9	-	15,0	CST-27152	7,87	-	11,82	-
26,9	-	25,0	CST-27252	7,87	-	19,70	-
26,9	-	50,0	CST-27502	7,87	-	39,40	-
39,2	-	14,6	CST-40132	11,36	-	14,76	-
39,2	-	26,6	CST-40252	11,36	-	28,39	-
39,2	-	39,6	CST-40382	11,36	-	43,15	-
39,2	-	51,6	CST-40502	11,36	-	56,78	-
▼ Double acting							
17,2	10,4	13,0	CDT-18132	5,10	3,03	6,63	3,94
17,2	10,4	25,0	CDT-18252	5,10	3,03	12,74	7,58
17,2	10,4	38,0	CDT-18382	5,10	3,03	19,37	11,52
17,2	10,4	50,0	CDT-18502	5,10	3,03	25,48	15,46
26,9	18,2	14,7	CDT-27152	7,87	5,29	11,81	7,94
26,9	18,2	24,7	CDT-27252	7,87	5,29	19,68	13,23
26,9	18,2	49,7	CDT-27502	7,87	5,29	39,35	26,45
39,2	26,1	13,0	CDT-40132	11,35	7,55	14,76	9,81
39,2	26,1	25,0	CDT-40252	11,35	7,55	28,39	18,87
39,2	26,1	38,0	CDT-40382	11,35	7,55	43,15	28,68
39,2	26,1	50,0	CDT-40502	11,35	7,55	56,77	37,74

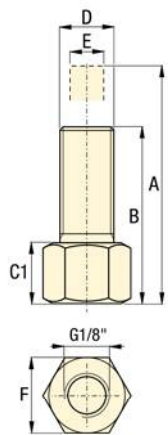
Note: - Seal material: Buna-N, Polyurethane.
- Minimum operating pressure for single-acting models (to overcome return spring force) is 40 bar.

We offer a Full Range of Hydraulic Products from a comprehensive range of manufacturers to bring you the products and systems most suited to your applications

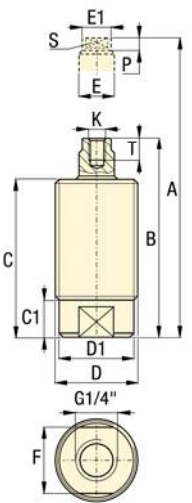


Dimensions & options CST, CDT-series

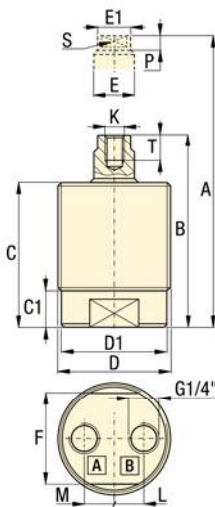
CST-272, -2102, 2132



Other CST models



CDT models



- Force: 1,7 - 39,2 kN**
- Stroke: 7,3 - 51,6 mm**
- Pressure: 40 - 350 bar**

- E** Cilindros roscados
- F** Vérins corps filetés
- D** Einschraubzylinder



Options

Accessories 86 ▶

Product dimensions in mm []

Model number	A Ext. height	B Retr. height	C	C1	D	D1	E	E1	F	K	L	M	P	S	T	kg
▼ Single acting																
CST-272	49,3	42,0	42,0	13,5	M12 x 1,5	-	4,8	-	16,0	-	-	-	-	-	-	0,1
CST-2102	52,8	42,8	42,8	14,3	M12 x 1,5	-	4,8	-	16,0	-	-	-	-	-	-	0,1
CST-2132	63,2	51,2	50,2	14,2	M12 x 1,5	-	4,8	-	16,0	-	-	-	-	-	-	0,1
CST-572	58,1	51,1	47,0	7,5	M20 x 1,5	17,7	7,9	7,0	15,9	M4 x 0,7	-	-	4,0	5,9	7,0	0,1
CST-5132	72,6	59,6	55,5	7,5	M20 x 1,5	17,7	7,9	7,0	15,9	M4 x 0,7	-	-	4,0	5,9	7,0	0,1
CST-5192	83,1	64,3	60,0	7,5	M20 x 1,5	17,7	7,9	7,0	15,9	M4 x 0,7	-	-	4,0	5,9	7,0	0,2
CST-5252	98,3	73,3	70,2	7,5	M20 x 1,5	17,7	7,9	7,0	15,9	M4 x 0,7	-	-	4,0	5,9	7,0	0,3
CST-5382	131,1	93,7	89,0	7,5	M20 x 1,5	17,7	7,9	7,0	15,9	M4 x 0,7	-	-	4,0	5,9	7,0	0,4
CST-1072	67,0	58,4	52,0	10,5	M28 x 1,5	26,0	11,9	11,0	24,0	M6 x 1	-	-	5,5	9,0	8,0	0,2
CST-10132	64,4	64,4	58,0	10,5	M28 x 1,5	26,0	11,9	11,0	24,0	M6 x 1	-	-	5,5	9,0	8,0	0,3
CST-10192	98,9	79,9	73,5	10,5	M28 x 1,5	26,0	11,9	11,0	24,0	M6 x 1	-	-	5,5	9,0	8,0	0,3
CST-10252	115,8	89,0	84,3	10,5	M28 x 1,5	26,0	11,9	11,0	24,0	M6 x 1	-	-	5,5	9,0	8,0	0,4
CST-10382	142,9	104,9	98,5	10,5	M28 x 1,5	26,0	11,9	11,0	24,0	M6 x 1	-	-	5,5	9,0	8,0	0,4
CST-18132	82,9	69,9	63,5	12,5	M35 x 1,5	32,5	16,0	15,0	30,0	M8 x 1,25	-	-	6,5	12,0	12,0	0,5
CST-18252	114,9	89,9	83,5	12,5	M35 x 1,5	32,5	16,0	15,0	30,0	M8 x 1,25	-	-	6,5	12,0	12,0	0,5
CST-18382	146,4	108,4	102,0	12,5	M35 x 1,5	32,5	16,0	15,0	30,0	M8 x 1,25	-	-	6,5	12,0	12,0	0,6
CST-18502	174,4	124,4	118,0	12,5	M35 x 1,5	32,5	16,0	15,0	30,0	M8 x 1,25	-	-	6,5	12,0	12,0	0,7
CST-27152	87,9	72,9	66,5	13,5	M42 x 1,5	39,8	18,0	17,0	36,0	M8 x 1,25	-	-	6,5	15,0	12,0	0,6
CST-27252	118,4	93,4	87,0	13,5	M42 x 1,5	39,8	18,0	17,0	36,0	M8 x 1,25	-	-	6,5	15,0	12,0	0,9
CST-27502	195,9	145,9	139,5	13,5	M42 x 1,5	39,8	18,0	17,0	36,0	M8 x 1,25	-	-	6,5	15,0	12,0	1,3
CST-40132	89,4	74,8	68,5	11,0	M48 x 1,5	45,4	19,9	19,0	41,4	M10 x 1,5	-	-	8,0	16,9	12,0	1,0
CST-40252	120,9	94,3	88,0	11,0	M48 x 1,5	45,4	19,9	19,0	41,4	M10 x 1,5	-	-	8,0	16,9	12,0	1,1
CST-40382	164,9	125,3	119,0	11,0	M48 x 1,5	45,4	19,9	19,0	41,4	M10 x 1,5	-	-	8,0	16,9	12,0	1,5
CST-40502	188,6	137,0	130,7	11,0	M48 x 1,5	45,4	20,0	19,0	41,4	M10 x 1,5	-	-	8,0	16,9	12,0	1,7
▼ Double acting																
CDT-18132	81,0	68,0	61,5	16,0	M48 x 1,5	45,7	15,8	15,0	41,0	M8 x 1,25	12,8	12,8	6,5	12,7	12,0	1,0
CDT-18252	107,0	82,0	75,5	16,0	M48 x 1,5	45,7	15,8	15,0	41,0	M8 x 1,25	12,8	12,8	6,5	12,7	12,0	1,3
CDT-18382	131,5	93,5	87,0	16,0	M48 x 1,5	45,7	15,8	15,0	41,0	M8 x 1,25	12,8	12,8	6,5	12,7	12,0	1,5
CDT-18502	155,5	105,5	99,0	16,0	M48 x 1,5	45,7	15,8	15,0	41,0	M8 x 1,25	12,8	12,8	6,5	12,7	12,0	1,7
CDT-27152	85,7	71,0	64,5	17,0	M55 x 1,5	52,7	17,9	17,0	46,0	M8 x 1,25	16,0	10,0	6,5	15,8	12,0	1,1
CDT-27252	106,7	82,0	75,5	17,0	M55 x 1,5	52,7	17,9	17,0	46,0	M8 x 1,25	16,0	10,0	6,5	15,8	12,0	1,4
CDT-27502	156,7	107,0	100,5	17,0	M55 x 1,5	52,7	17,9	17,0	46,0	M8 x 1,25	16,0	10,0	6,5	15,8	12,0	1,8
CDT-40132	91,5	78,5	70,5	17,5	M65 x 1,5	60,5	21,9	21	54,9	M10 x 1,5	19,5	10,5	8,0	16,9	15,0	1,8
CDT-40252	115,5	90,5	82,5	17,5	M65 x 1,5	60,5	21,9	21,0	54,9	M10 x 1,5	19,5	10,5	8,0	16,9	15,0	2,0
CDT-40382	141,5	103,5	95,5	17,5	M65 x 1,5	60,5	21,9	21,0	54,9	M10 x 1,5	19,5	10,5	8,0	16,9	15,0	2,5
CDT-40502	175,0	125,0	117,0	17,5	M65 x 1,5	60,5	21,9	21,0	54,9	M10 x 1,5	19,5	10,5	8,0	16,9	15,0	3,0

We offer a Full Range of Hydraulic Products from a comprehensive range of manufacturers to bring you the products and systems most suited to your applications

Authorized
ENERPAC
Distributor

Linear Cylinders
Power Sources
Valves
Pallet Components
System Components
Yellow Pages