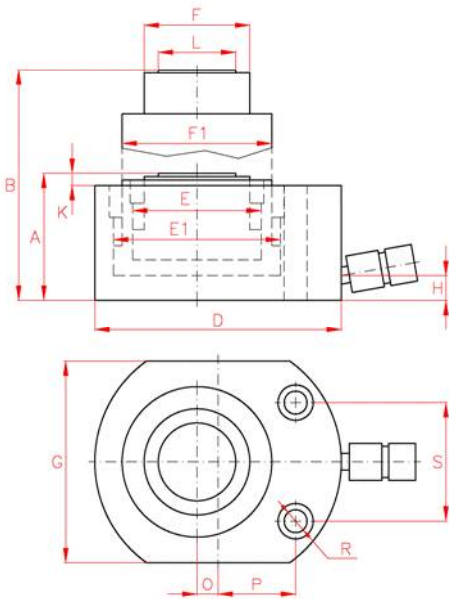


# SLX Telescopic Low Height Cylinders



- Capacity from 4 to 50 Tn, stroke up to 53 mm.
- Models with two, three and four stages.
- Load return.
- For use in confined spaces: machinery positioning, tool fastening.
- Mounting bolt holes for easy fixing.
- All models are black nitrated.



Model	Capacity		Stages	Total	Total	Closed	Extended	Weight
	(Tonne)	(kN)		Stroke (mm)	Oil Cap. (cm3)	Height (mm)	Height (mm)	
SLX00422	4	42	2	21.5	22.4	43.5	65	1.5
SLX00432	4	42	3	32	58.1	53.5	85.5	2.9
SLX00454	4	42	4	53.5	199.9	71	124.5	6.9
SLX01022	10	100	2	21.5	51.7	53.5	75	2.9
SLX01043	10	100	3	43	193.5	71	114	6.9
SLX03031	30	287	2	31	167.1	71	102	6.9
SLX05033	50	487	2	31	342.5	87	120	14.6

Model	A (mm)	B (mm)	D (mm)	E (mm)	E1 (mm)	F (mm)	F1 (mm)	G (mm)	H (mm)	K (mm)	L (mm)	O (mm)	P (mm)	R (mm)	S (mm)	Weight (kg)
SLX00422	43,5	65,0	83	28	43	22	38	56	20	1,0	-	12,5	20,5	6,5	37	1,5
SLX00432	53,5	85,5	102	28	65	22	57	80	20	2,5	-	10,0	29,0	9,0	50	2,9
SLX00454	71,0	124,5	140	28	95	22	85	114	20	6,0	-	12,0	44,0	13,0	67	6,9
SLX01022	53,5	75,0	102	43	65	38	57	80	20	2,5	30	10,0	29,0	9,0	50	2,9
SLX01043	71,0	114,0	140	43	95	38	85	114	20	6,0	30	12,0	44,0	13,0	67	6,9
SLX03031	71,0	102,0	140	73	95	60	85	114	20	6,0	44	12,0	44,0	13,0	67	6,9
SLX05033	87,0	120,0	178	95	133	78	112	162	20	3,0	62	-	70,0	6,6	76	14,6

Capacity (Tonne)	Model	1st Stage			2nd Stage			3rd Stage			4th Stage		
		Cap. (kN)	Stroke (mm)	Area (cm2)	Cap. (kN)	Stroke (mm)	Area (cm2)	Cap. (kN)	Stroke (mm)	Area (cm2)	Cap. (kN)	Stroke (mm)	Area (cm2)
4	SLX00422	100	11	14.5	42	10.5	6.15	-	-	-	-	-	-
4	SLX00432	228	11	33.1	100	10.5	14.5	43	10.5	6.15	-	-	-
4	SLX00454	488	16	70.8	287	15	41.8	100	12	14.5	42	10.5	6.15
10	SLX01022	228	11	33.1	100	10.5	14.5	-	-	-	-	-	-
10	SLX01043	488	16	70.8	287	15	41.8	100	12	14.5	-	-	-
30	SLX03031	488	16	70.8	287	15	41.8	-	-	-	-	-	-
50	SLX05033	954	16	138.9	487	17	70.8	-	-	-	-	-	-

We offer a Full Range of Hydraulic Products from a comprehensive range of manufacturers to bring you the products and systems most suited to your applications

