



SPECIFICATIONS

Maximum handle load : 284 N
 Single stage pumping
 Relief valve is not equipped
 Reservoir capacity : 165 cc

Output force : 191 kN

SIZE

675 (L) mm

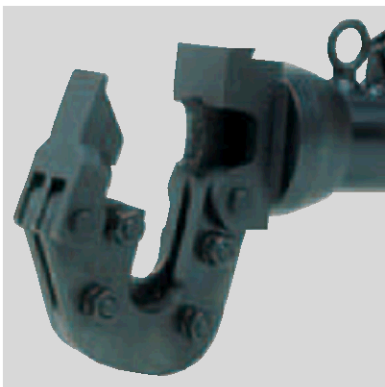
WEIGHT

9.3 kg

ACCESSORIES

Carrying bag

S-32A



S-32A (Latch opened)

FEATURES

Light weight portable hydraulic cutter features :

- * Guillotine type cutting for less jamming than shear type cutting
- * No set-up time required
- * All blades are easily replaceable
- * 180 degree rotating head allows for easy cutting positions
- * Flip-top latch for easy insertion of cutting material

REMARKS

Cutting of piano wire is prohibited.

Cutting capacity

Wire rope 6 x 7	: 32 mm
Wire rope 6 x 12	: 32 mm
Wire rope 6 x 19	: 32 mm
Soft steel bar	: 25 mm
Reinforcing rod	: 25 mm
Cu strands	: 32 mm
Al strands	: 32 mm
ACSR	: 32 mm
Guy wire 1 x 7	: 32 mm
Guy wire 1 x 19	: 32 mm
CCP cable	: N/A