

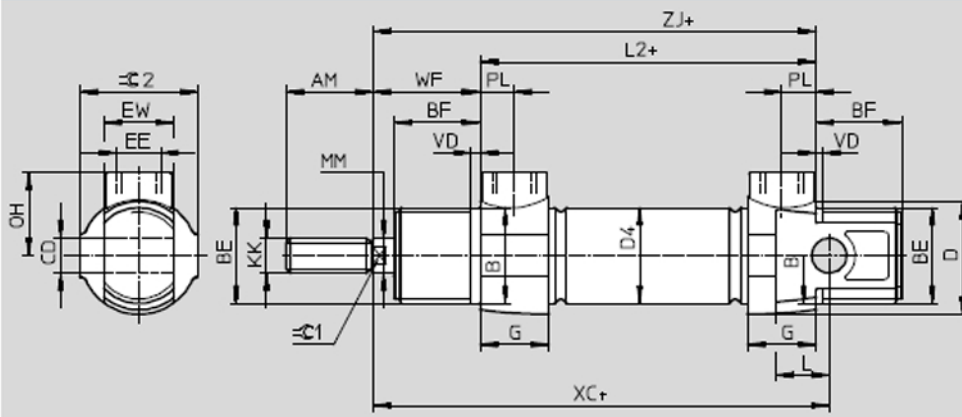
Standard cylinders DSNUP, ISO 6432

Technical data

FESTO

Dimensions

Download CAD data → [www.festo.com](http://www.festo.com)



Note  
 For the compressed air ports only push-in fittings or one-way flow control valves with cylindrical connecting thread (M or G thread) may be used. Piston rod nut is not included in scope of delivery for  $\varnothing 16/20$ .  
 + = plus stroke length

$\varnothing$	AM	B $\varnothing$ h9	BE	BF	CD $\varnothing$ H9	D $\varnothing$	D4 $\varnothing$	EE
16	16	16	M16x1.5	17	6	20	18	M5
20	20	22	M22x1.5	20	8	27	22	G $\frac{1}{8}$
25	22	22	M22x1.5	22	8	27	27	G $\frac{1}{8}$

$\varnothing$	EW	G	KK	L	L2	MM $\varnothing$	OH	PL	VD
16	12	10	M6	8	56	6	14	4.9	2
20	16	16	M8	12	68	8	19	7.9	2
25	16	16	M10x1.25	12	70	10	19	7.9	2

$\varnothing$	WF	XC $\pm 1$	ZJ	$\approx C 1$	$\approx C 2$	Max. tightening torque of thread [Nm]	
						BE <sup>1)</sup>	EE
16	22	82	78	5	19	12/8	1.3
20	24	95	92	7	27	22/15	6
25	28	104	98	9	27	22/15	6

1) Bearing cap/end cap

We offer a Full Range of Hydraulic and Pneumatic Products from a comprehensive range of manufacturers to bring you the products and systems most suited to your applications

