

## HC-D10-AL Monoblock Valves

### Features:

- HC-D10 belongs to the wide range of Hydrocontrol S.p.A. monoblock valves and is capable of working with a maximum flow of 55 litres/min. at an operating pressure of 350 bar.
- Numerous integrated valve features in addition to countless configuration options make HC-D10 highly flexible and easily adaptable to the widest applications range.
- The possibility to utilise a wide variety of interchangeable spools circuit and different combinations between them, gives an answer to every requirement.



### Applications:

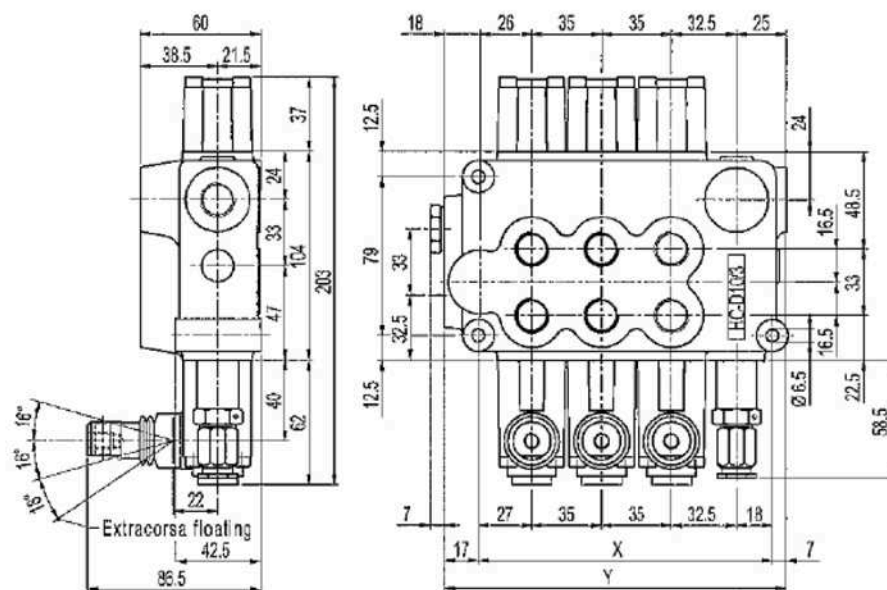
- Cranes and aerial platforms and agricultural machines.

### Technical specifications:

| Working section No. | Rated flow | Rated pressure | Spool stroke | Spool pitch | Circuit type |
|---------------------|------------|----------------|--------------|-------------|--------------|
| 1 - 6               | 55 l/min   | 350 bar        | 5+5 mm       | 35 mm       | Parallel     |

### Dimensions:

| Type                        | D10/1         | D10/2 | D10/3         | D10/4 | D10/5         | D10/6         |
|-----------------------------|---------------|-------|---------------|-------|---------------|---------------|
| X (mm)                      | 77.5          | 112.5 | 147.5         | 182.5 | 217.5         | 252.5         |
| Y (mm)                      | 101.5         | 136.5 | 171.5         | 206.5 | 241.5         | 276.5         |
| Weights (Kg)                | 2.90          | 4.30  | 5.50          | 6.70  | 7.90          | 9.10          |
| Ports                       | Inlet (P)     |       | Ports (A-B)   |       | Outlet (T)    |               |
| BSP Thread (ISO 1179-1)     | G 3/8 - G 1/2 |       | G 3/8 - G 1/2 |       | G 3/8 - G 1/2 |               |
| UN-UNF Thread (ISO 11926-1) | 3/4"-16 UNF   |       | 3/4"-16 UNF   |       | 3/4"-16 UNF   |               |
|                             |               |       |               |       |               | Outlet (HPCO) |
|                             |               |       |               |       |               | G 3/8 - G 1/2 |
|                             |               |       |               |       |               | 3/4"-16 UNF   |

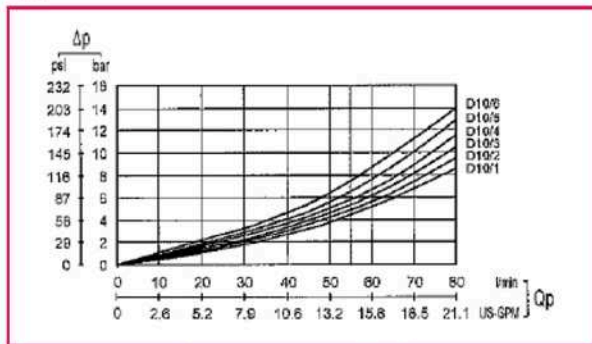


We offer a Full Range of Hydraulic Products from a comprehensive range of manufacturers to bring you the products and systems most suited to your applications

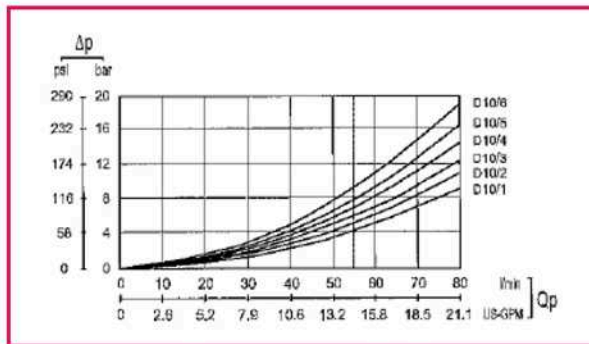


## HC-D10-AL Monoblock Valves

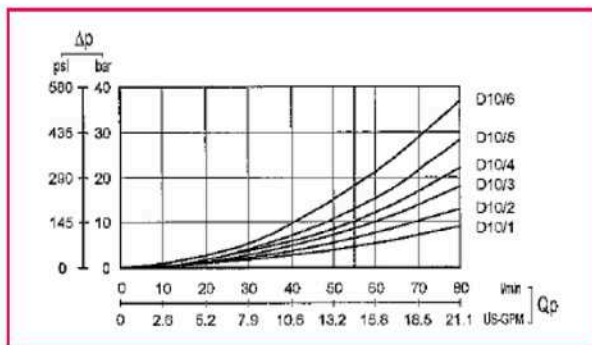
Typical curves:



Pressure drop (P - A/B)



Pressure drop (A/B - T)



Pressure drop (P - T)

### Model code

| HC-D10/1  | IR 201 (***) | W001A | H001                   | F001A | MJA | G03  |
|---|--------------|-------|------------------------|-------|-----|--|
| <p>Monoblock valve type:<br/>D10 = product type<br/>/1 - /6 = number of sections</p> <p>Inlet arrangement:<br/>IR 201 = inlet side and valve type<br/>150 = setting (bar)<br/>IR 303 = inlet side, no relief valve</p> <p>Work section arrangement:<br/>W001A = double-acting spool<br/>W002A = double-acting spool<br/>W005A = single-acting spool</p> |              |       |                        |       |     | <p>G03 = outlet and thread position</p> <p>Outlet arrangement:<br/>MJA = outlet type (as standard)<br/>MMT = plus high pressure carry over</p> <p>F001A = spring centred<br/>F002A = double-acting detent<br/>(Other options available on request)</p> |
|   |              |       | H001 = spool actuation |       |     |  |

We offer a Full Range of Hydraulic Products from a comprehensive range of manufacturers to bring you the products and systems most suited to your applications

